

2022

Ruzi[®]



LEGENDAS / SUBTITLES / LEYENDA SOTTOTITOLO / LÉGENDE / BILDLEGENDE

Aplicação Indicada / Indicated Application
Aplicación Indicada/ Applicazione Indicata
Applications Indiqué / Einsatzzweck Geeignet



Rodoviário / Highway
Carretera / Autostrada
Autoroute / Autobahn



Regional / Regional
Regional / Regionale
Régional / Regional



Fora de Estrada / Off-road
Fuera de Carretera / Fuoristrada
Hors la Route / Gelände



Misto / On/off road
Todoterreno / Misto
Mixte / Gemischt



Urbano / Urban
Urbano / Uso Urbano
Urbain / Stadtverkehr



Eixo de Tração / Drive Axle
Eje de Tracción / Asse Trattivo
Essieu de Moteur / Antriebsachse



Eixo Livre / Trailer Axle
Eje Libre / Asse Trainato O Asse Lineare
Essieu Porteur / Nachlaufachse



Super Single



Lama e Neve / Mud and Snow
Barro y Nieve / Fango e Neve
Boue et La Neige / Winter und Matschreifen



Banda aprovada para uso em condições severas de neve, de acordo com resultados obtidos segundo a norma europeia ECE R117 a partir de testes realizados em laboratório acreditado / Tread approved for use in severe snow conditions, according to results obtained under EU regulation ECE R117 based on tests conducted at an accredited laboratory / Banda aprobada para su uso en condiciones severas de nieve, según los resultados obtenidos conforme a la norma europea ECE R117 a partir de pruebas realizadas en un laboratorio acreditado / Battistrada approvato per l'uso in condizioni di neve severe, in base ai risultati ottenuti in conformità con la norma europea ECE R117 mediante provee realizate in un laboratorio acreditado / Bande homologuée pour son utilisation en cas de neige extrême, selon les résultats obtenus conformément à la norme européenne ECE R117 à partir des essais réalisés en laboratoire agréé / Aufgrund der erzielten Ergebnisse entsprechend der europäischen Norm ECE R117 bei Tests, die von einer zugelassenen Stelle durchgeführt wurden, wurde der Laufstreifen bei tief winterlichen Fahrbedingungen zugelassen.



Largura do Piso
Tread Width
Ancho de la Banda
Larghezza Battistrada
Largeur de Bande de Rouleemnt
Laufstreifen-breite



Profundidade do Perfil
Tread Depth
Profundidad des Perfil
Spessore Battistrada
Profondeur du Profil
Profittiefe



Largura com Aba
Width with Wing
Ancho com Ala
Larghezza con Aletta
Largeur avec Bord
Breite Mit Rand



Peso
Weight
Peso
Peso
Poids
Gewicht



Comprimento de Rolo
Roll Length
Longitud del Rollo
Lunghezza del Rotolo
Longueur du Rouleau
Rollenlänge

LEGENDAS / SUBTITLES / LEYENDA SOTTOTITOLO / LÉGENDE / BILDLEGENDE



Passeio / Passenger Car
Paseo / Automobili
Voiture de passagers / PKW



Camionetas e Caminhonetes
Small trucks / Camioneta / Furgone
Camionette / Klein LKW, Nutzfahrzeug



Pick-Up, camionete / Pick-Up
Pick-Up, Furgonete / Pick-Up, Camioncini
Pick-Up, Camionett / Pick-Up, Lieferwagen



Utilitário, Van / Utility Vehicles, Van
Utilitarios, Van / Utilitaire, Caravan
Véhicules Utilitaires, Camionette
Nutzfahrzeug, Kleinlaster



Comercial leve / Commercial
Camión Furgón / Furgone
Camion Fourgon / Kasten-LKW



Micro-ônibus / Minibus
Microbús / Minibus
Microbus / Mikrobus



Ônibus rodoviário / Highway Bus
Autobús Carretero / Autobus per il trasporto stradale
Autobus Autoroutier / Reisebus



Ônibus urbano / Urban Bus
Autobús Urbano / Autobus per il trasporto urbano
Autobus urbain / Bus für Stadtverkehr



Caminhão toco / Medium Duty Truck
Camión con remolque/ Camión aislado
Camion com rimorchio / Camion isolato
Camion avec remorque/ Camion isole
LKW mit Anhänger/ Isolierter LKW



Caminhão trucado / Medium Duty Truck (Tandem Axle)
Camión Rígido com chassis Y Camión Volcad or
Dumper a telaio rigido e Camion Ribaltabile
Camion rigide avec châssis et Camion de renversement
Starrer LKW-Box mit Chassis um Kipplaster



Cavalo mecânico / Single Axle Tractor Truck
Tractor / Trattore / Tracteur / Traktor



Reboque semirreboque / Trailer and Semi-Trailer
Remolque y Semirremolque / Rimorchio e Semirimorchio
Remorque et Semi-remorque / Anhänger und Sattelanhänger



Cavalo mecânico traçado / Tandem Axle Tractor Truck
Camión com cchassis y acoplado / Camión Chato Tracción Integral / Autotreno
Camion a Trazione Integrale / Camion avec Châssis et remorque
Camion Traction intégrale / LKW mit Chassis und Kupplung
Sattelschepper mit integrierten Antrieb

| | | | |
|--------------------|----|-----------------------|----|
| R167 | 6 | RZL115L | 7 |
| R167B | 6 | RZL140A | 12 |
| RDA4 | 5 | RZL150A | 12 |
| RDE2 | 5 | RZM300 | 12 |
| RDY | 14 | RZM320 | 11 |
| REL | 7 | RZT | 15 |
| RELB | 7 | RZT190 | 10 |
| RFE | 15 | RZT220 | 5 |
| RFS | 10 | RZT230 | 5 |
| RLL | 15 | RZT240 | 6 |
| RM729 | 6 | RZT51 | 13 |
| RRL2 | 13 | RZT510 | 14 |
| RU | 11 | RZT520 | 14 |
| RZA80 | 10 | RZT540 | 14 |
| RZAB | 12 | RZU | 11 |
| RZE1 | 10 | RZU3 | 11 |
| RZE2 | 7 | RZY/RZYE | 13 |
| RZH | 15 | RZY2 | 13 |



RDE2



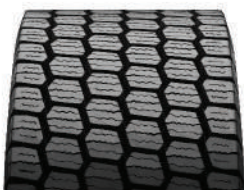
| mm | mm | mm | kg/m | m |
|-----|----|------|------|-------|
| 200 | - | 18,0 | 4,17 | 11,53 |
| 210 | - | 18,0 | 4,35 | 11,59 |
| 220 | - | 18,0 | 4,59 | 11,57 |
| 230 | - | 19,0 | 4,96 | 11,56 |
| 240 | - | 19,0 | 5,17 | 11,56 |
| 250 | - | 19,0 | 5,43 | 11,50 |
| 260 | - | 19,0 | 5,64 | 11,63 |
| 270 | - | 19,0 | 5,77 | 11,58 |



RDA4



| mm | mm | mm | kg/m | m |
|-----|----|------|------|-------|
| 230 | - | 17,0 | 4,44 | 11,59 |
| 240 | - | 17,0 | 4,59 | 11,60 |
| 250 | - | 17,0 | 4,84 | 10,45 |



RZT220



| mm | mm | mm | kg/m | m |
|-----|----|-------|------|-------|
| 250 | - | 20,00 | 5,09 | 11,66 |
| 260 | - | 20,00 | 5,37 | 11,63 |
| 270 | - | 19,00 | 5,45 | 11,55 |
| 280 | - | 19,00 | 5,57 | 11,61 |



RZT230



| mm | mm | mm | kg/m | m |
|-----|----|-------|------|-------|
| 225 | - | 19,00 | 4,75 | 11,60 |
| 235 | - | 19,00 | 4,95 | 11,55 |
| 245 | - | 19,00 | 5,11 | 11,60 |
| 255 | - | 19,00 | 5,34 | 11,61 |





RZT240



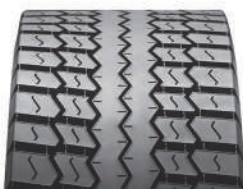
| mm | mm | mm | kg/m | m |
|-----|----|------|------|-------|
| 250 | - | 20,0 | 5,14 | 11,60 |
| 260 | - | 20,0 | 5,31 | 11,63 |
| 275 | - | 20,0 | 5,56 | 11,61 |
| 285 | - | 18,0 | 5,32 | 11,62 |



RM729



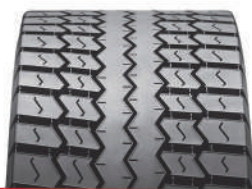
| mm | mm | mm | kg/m | m |
|-----|----|------|------|-------|
| 245 | - | 19,0 | 5,03 | 11,58 |
| 255 | - | 19,0 | 5,24 | 11,58 |
| 265 | - | 19,0 | 5,65 | 11,56 |
| 275 | - | 18,0 | 5,29 | 11,62 |
| 285 | - | 18,0 | 5,60 | 11,53 |



R167



| mm | mm | mm | kg/m | m |
|-----|----|------|------|-------|
| 197 | - | 18,0 | 4,06 | 11,58 |
| 205 | - | 18,0 | 4,21 | 11,58 |
| 215 | - | 18,0 | 4,41 | 11,55 |
| 225 | - | 18,0 | 4,62 | 11,53 |
| 235 | - | 18,0 | 4,84 | 11,62 |

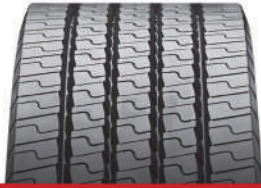


R167B



| mm | mm | mm | kg/m | m |
|-----|----|------|------|-------|
| 190 | - | 14,0 | 3,10 | 11,56 |
| 205 | - | 14,0 | 3,23 | 11,56 |
| 215 | - | 14,0 | 3,42 | 11,58 |
| 225 | - | 14,0 | 3,67 | 11,60 |





RZE2



| mm | mm | mm | kg/m | m |
|-----|----|------|------|-------|
| 230 | - | 16,0 | 4,47 | 11,61 |
| 240 | - | 16,0 | 4,56 | 11,57 |
| 250 | - | 16,0 | 4,78 | 11,57 |
| 260 | - | 16,0 | 4,98 | 11,57 |



RZL115L



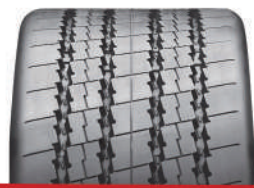
| mm | mm | mm | kg/m | m |
|-----|----|------|------|-------|
| 226 | - | 12,0 | 3,03 | 11,56 |
| 234 | - | 12,0 | 3,14 | 11,57 |
| 242 | - | 12,0 | 3,26 | 11,55 |
| 250 | - | 12,0 | 3,35 | 11,57 |
| 258 | - | 12,0 | 3,46 | 11,59 |



REL



| mm | mm | mm | kg/m | m |
|-----|----|------|------|-------|
| 200 | - | 14,0 | 3,25 | 11,57 |
| 210 | - | 14,0 | 3,53 | 11,55 |
| 220 | - | 14,0 | 3,67 | 11,63 |
| 230 | - | 14,0 | 3,80 | 11,58 |
| 240 | - | 14,0 | 3,98 | 11,62 |
| 250 | - | 14,0 | 4,10 | 11,56 |
| 260 | - | 14,0 | 4,30 | 11,55 |
| 270 | - | 14,0 | 4,40 | 11,59 |



RELB



| mm | mm | mm | kg/m | m |
|-----|----|------|------|-------|
| 190 | - | 11,0 | 2,54 | 11,62 |
| 200 | - | 11,0 | 2,69 | 11,60 |
| 210 | - | 11,0 | 2,88 | 11,55 |
| 220 | - | 11,0 | 2,95 | 11,58 |
| 230 | - | 11,0 | 3,12 | 11,56 |
| 240 | - | 11,0 | 3,14 | 11,64 |
| 250 | - | 11,0 | 3,48 | 11,59 |
| 260 | - | 11,0 | 3,60 | 11,58 |
| 270 | - | 11,0 | 3,68 | 11,61 |



Ruzi®

ALPINE SYMBOL

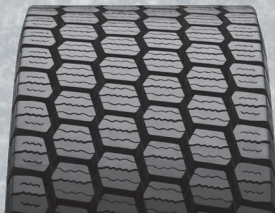


NEVE? A RUZI PASSA POR CIMA COM O ALPINE SYMBOL.
SNOW? RUZI CONTINUES ONWARD WITH THE ALPINE SYMBOL.
NIEVE? RUZI SIGUE ADELENTE CON EL ALPINE SYMBOL.
NEIGE? RUZI VA DE LEVANT AVEC ALPINE SYMBOL.
SCHNEE? RUZI IST NICHT ZU STOPPEN MIT ALPINE SYMBOL.

RZT540

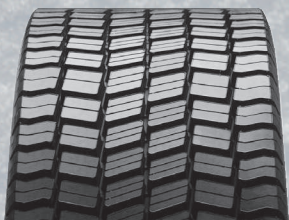


RZT220



ALPINE SYMBOL

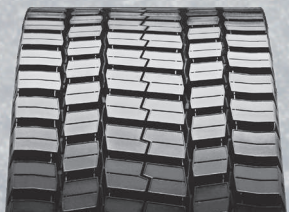
RDA4



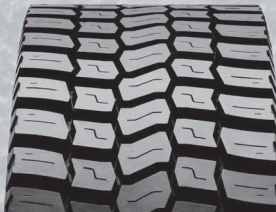
RDE2



RM729



RZT240



VZU3





RZT190



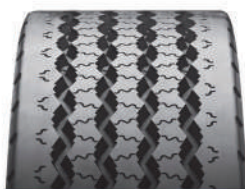
| mm | mm | mm | kg/m | m |
|-----|----|------|------|-------|
| 160 | - | 13,0 | 2,32 | 11,62 |
| 170 | - | 13,0 | 2,46 | 11,61 |
| 180 | - | 13,0 | 2,61 | 11,62 |
| 190 | - | 13,0 | 2,75 | 11,62 |
| 200 | - | 13,0 | 2,88 | 11,60 |



RFS



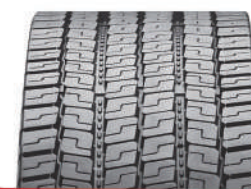
| mm | mm | mm | kg/m | m |
|-----|----|-------|------|-------|
| 180 | - | 10,50 | 2,05 | 11,57 |
| 190 | - | 10,50 | 2,16 | 11,55 |
| 210 | - | 10,50 | 2,40 | 11,57 |



RZA80



| mm | mm | mm | kg/m | m |
|-----|----|------|------|-------|
| 215 | - | 15,5 | 3,68 | 11,58 |
| 223 | - | 15,5 | 3,86 | 11,56 |
| 230 | - | 15,0 | 3,92 | 11,60 |
| 245 | - | 15,5 | 4,31 | 11,53 |
| 258 | - | 15,5 | 4,31 | 11,55 |



RZE1



| mm | mm | mm | kg/m | m |
|-----|----|------|------|-------|
| 160 | - | 12,0 | 2,21 | 11,56 |
| 180 | - | 12,0 | 2,50 | 11,54 |
| 190 | - | 12,0 | 2,72 | 11,55 |





RZM320



| mm | mm | mm | kg/m | m |
|-----|----|------|------|------|
| 230 | - | 15,0 | 4,11 | 3,20 |
| 240 | - | 15,0 | 4,28 | 3,20 |
| 250 | - | 15,0 | 4,45 | 3,20 |



RU



| mm | mm | mm | kg/m | m |
|-----|----|-----|------|-------|
| 165 | - | 9,5 | 2,04 | 11,56 |
| 175 | - | 9,5 | 2,16 | 11,59 |
| 185 | - | 9,5 | 2,28 | 11,59 |
| 195 | - | 9,5 | 2,39 | 11,58 |



RZU



| mm | mm | mm | kg/m | m |
|-----|----|------|------|-------|
| 220 | - | 18,0 | 4,79 | 11,58 |
| 230 | - | 18,0 | 4,84 | 11,57 |
| 240 | - | 18,0 | 5,05 | 11,57 |
| 250 | - | 18,0 | 5,29 | 11,59 |



RZU3



| mm | mm | mm | kg/m | m |
|-----|----|------|------|-------|
| 230 | - | 20,0 | 5,10 | 11,60 |
| 240 | - | 20,0 | 5,28 | 11,54 |





RZM300



| mm | mm | mm | kg/m | m |
|-----|----|------|------|-------|
| 225 | - | 16,0 | 4,15 | 11,51 |
| 235 | - | 16,0 | 4,31 | 11,60 |
| 245 | - | 16,0 | 4,53 | 11,61 |



RZAB



| mm | mm | mm | kg/m | m |
|-----|-----|------|------|-------|
| 295 | 335 | 13,0 | 4,58 | 11,56 |



RZL140A



| mm | mm | mm | kg/m | m |
|-----|-----|------|------|-------|
| 300 | 336 | 14,0 | 5,12 | 11,56 |



RZL150A



| mm | mm | mm | kg/m | m |
|-----|-----|------|------|-------|
| 290 | 326 | 14,0 | 4,85 | 11,58 |





RRL2



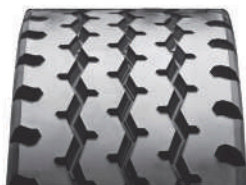
| mm | mm | mm | kg/m | m |
|-----|----|------|------|-------|
| 295 | - | 10,5 | 3,54 | 10,53 |



RZT51



| mm | mm | mm | kg/m | m |
|-----|----|------|------|-------|
| 152 | - | 12,0 | 2,06 | 11,62 |
| 158 | - | 12,0 | 2,08 | 11,56 |
| 168 | - | 12,5 | 2,22 | 11,61 |
| 184 | - | 12,5 | 2,42 | 11,61 |
| 194 | - | 12,5 | 2,57 | 11,61 |
| 205 | - | 12,5 | 2,87 | 11,58 |



RZY/RZYE*



| mm | mm | mm | kg/m | m |
|------|----|------|------|-------|
| 152 | - | 11,0 | 1,99 | 11,58 |
| 160 | - | 12,0 | 2,35 | 11,56 |
| 170 | - | 12,0 | 2,49 | 11,56 |
| 180 | - | 12,0 | 2,65 | 11,57 |
| 190 | - | 14,5 | 3,23 | 11,54 |
| 200 | - | 14,5 | 3,46 | 11,54 |
| 210 | - | 15,0 | 3,67 | 11,60 |
| 219 | - | 15,0 | 3,82 | 11,56 |
| 225 | - | 15,0 | 4,03 | 11,59 |
| 235 | - | 15,0 | 4,06 | 11,62 |
| 240* | - | 16,0 | 4,20 | 11,57 |
| 250 | - | 15,0 | 4,47 | 11,56 |
| 260 | - | 16,5 | 5,02 | 11,57 |



RZY2



| mm | mm | mm | kg/m | m |
|-----|----|------|------|-------|
| 215 | - | 18,0 | 4,37 | 11,57 |
| 225 | - | 18,0 | 4,57 | 11,53 |
| 235 | - | 18,0 | 4,77 | 11,62 |
| 240 | - | 18,0 | 4,85 | 11,60 |
| 250 | - | 18,0 | 5,19 | 11,57 |
| 260 | - | 18,0 | 5,24 | 11,59 |





RDY



| mm | mm | mm | kg/m | m |
|-----|----|------|------|-------|
| 220 | - | 17,5 | 4,16 | 11,56 |
| 230 | - | 17,0 | 4,35 | 11,56 |
| 240 | - | 17,0 | 4,52 | 11,57 |
| 250 | - | 17,0 | 4,74 | 11,56 |



RZT510



| mm | mm | mm | kg/m | m |
|-----|----|------|------|-------|
| 230 | - | 21,0 | 5,29 | 11,58 |
| 240 | - | 21,0 | 5,52 | 11,55 |
| 250 | - | 21,0 | 5,76 | 11,56 |
| 260 | - | 21,0 | 5,99 | 11,57 |



RZT540



| mm | mm | mm | kg/m | m |
|-----|----|------|------|-------|
| 240 | - | 22,0 | 5,64 | 11,57 |
| 250 | - | 22,0 | 5,91 | 11,58 |
| 260 | - | 22,0 | 6,10 | 11,57 |
| 270 | - | 22,0 | 6,35 | 11,56 |



RZT520



| mm | mm | mm | kg/m | m |
|-----|----|------|------|-------|
| 240 | - | 19,0 | 5,15 | 11,57 |
| 250 | - | 19,0 | 5,35 | 11,60 |
| 260 | - | 19,0 | 5,57 | 11,60 |





RFE



| mm | mm | mm | kg/m | m |
|-----|----|------|------|-------|
| 220 | - | 23,0 | 5,21 | 11,58 |
| 230 | - | 23,0 | 5,47 | 11,59 |
| 240 | - | 23,0 | 5,67 | 11,61 |



RZH



| mm | mm | mm | kg/m | m |
|-----|----|------|------|-------|
| 220 | - | 23,0 | 5,36 | 11,51 |
| 230 | - | 23,0 | 5,58 | 11,53 |
| 240 | - | 23,0 | 5,74 | 11,60 |
| 260 | - | 23,0 | 6,36 | 11,51 |



RLL



| mm | mm | mm | kg/m | m |
|-----|----|------|------|-------|
| 194 | - | 17,0 | 3,69 | 11,59 |
| 203 | - | 17,0 | 3,94 | 11,57 |
| 211 | - | 17,0 | 4,07 | 11,56 |
| 219 | - | 17,0 | 4,25 | 11,56 |
| 235 | - | 17,0 | 4,14 | 11,58 |
| 241 | - | 17,0 | 4,52 | 11,54 |



RZT



| mm | mm | mm | kg/m | m |
|-----|----|------|------|-------|
| 220 | - | 18,5 | 4,32 | 11,57 |
| 235 | - | 18,0 | 4,45 | 11,56 |
| 245 | - | 18,0 | 4,59 | 11,54 |



Ruzi®

**CENTRAL OPERATION /
CENTRO DE OPERACIONES
VIPAL EUROPE**

Av. Amado Granell Mesado 75,
5K-46013 – Valencia, España
Tel.: (34) 963259510

www.vipal.com - sales.eu@vipal.com

HEADQUARTERS / SEDE CENTRAL

Av. Severo Dullius, 1395
São João – CEP 90200-310
Porto Alegre – RS – Brasil
Tel.: +55 51 3205 3050

www.ruzi.com.br - ruzi@ruzi.com.br

